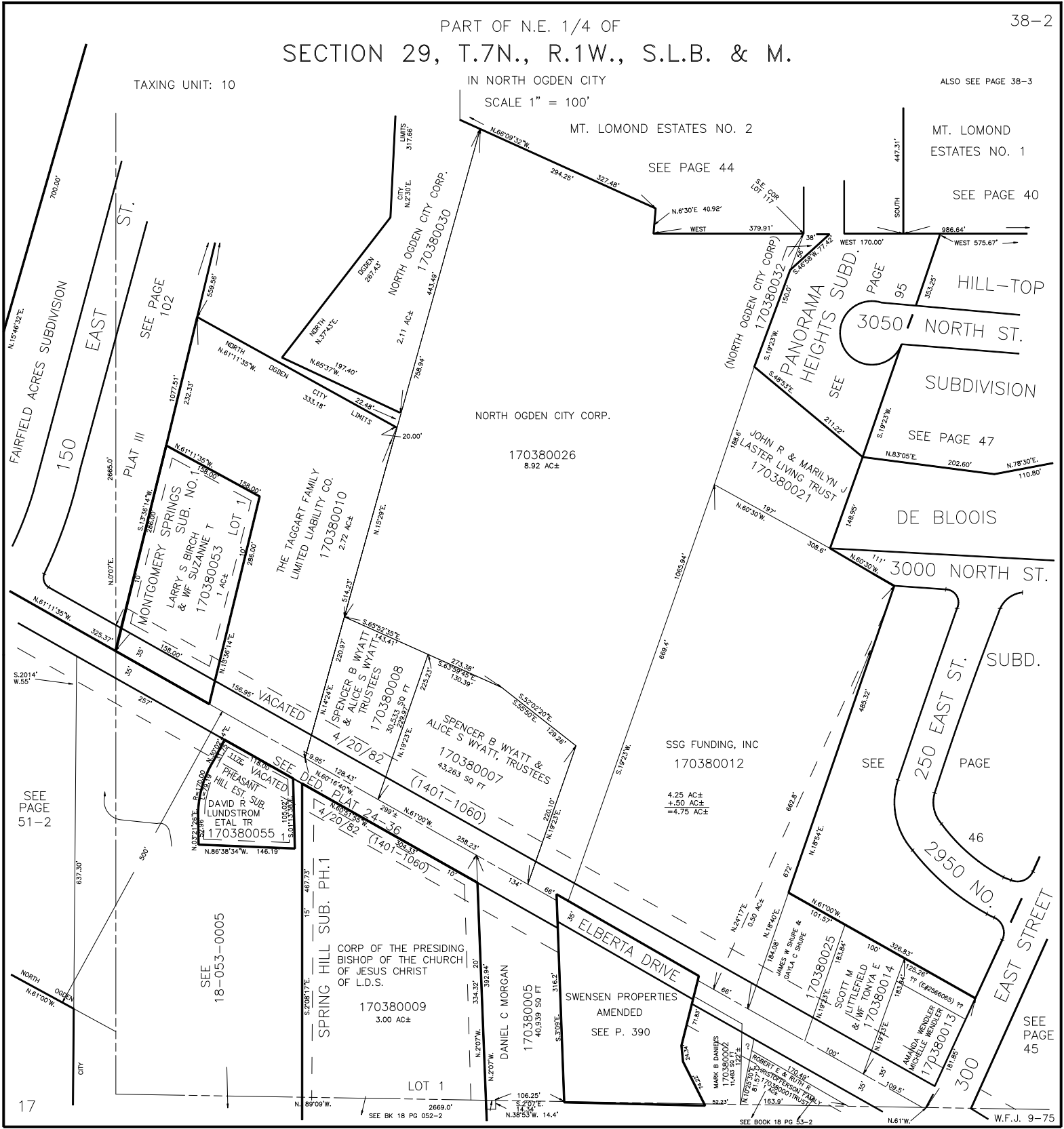


PART OF N.E. 1/4 OF SECTION 29, T.7N., R.1W., S.L.B. & M.

TAXING UNIT: 10

IN NORTH OGDEN CITY
SCALE 1" = 100'

ALSO SEE PAGE 38-3



MT. LOMOND ESTATES NO. 2

MT. LOMOND ESTATES NO. 1

SEE PAGE 44

SEE PAGE 40

NORTH OGDEN CITY CORP.

170380026
8.92 AC±

(NORTH OGDEN CITY CORP)
170380032
SEE PAGE 95

HILL-TOP SUBDIVISION
SEE PAGE 47

JOHN R & MARILYN J LASTER LIVING TRUST
170380021

DE BLOIS

3000 NORTH ST.

SSG FUNDING, INC
170380012

4.25 AC±
+.50 AC±
=4.75 AC±

250 EAST ST. SUBD.
SEE PAGE 46

2950 NO. EAST STREET

SEE PAGE 45